

ANCIENT EMPIRES REPRODUCTIONS

GLADIATORS



Gladiator games were an important part of Roman culture, and even back at their time were despised and loved likewise by Romans.

The first Roman games were, according to Livius, held in 264 BCE during a funerary ceremony. It is not clear whether the games, especially in the funerary context, were adapted from the Etruscans, where we have indeed ritual blood sacrifices in forms of duels attested through archaeological sources, or from the southern Italic tribes, where duels play an important part in representative art. The gladiatorial games became more and more popular, and even got their own architectural form, the amphitheatre, the first one in stone was erected in Pompeii. With a stronger influence of christianity the games were forbidden frequently, but to no avail, as it seems, until the last games were held, finally, around 450.

MANY GLADIATORIAL GAMES WERE GIVEN IN THAT YEAR, SOME UNIMPORTANT, ONE NOTEWORTHY BEYOND THE REST — THAT OF TITUS FLAMINIUS WHICH HE GAVE TO COMMEMORATE THE DEATH OF HIS FATHER, WHICH LASTED FOUR DAYS, AND WAS ACCOMPANIED BY A PUBLIC DISTRIBUTION OF MEATS, A BANQUET, AND SCENIC PERFORMANCES. THE CLIMAX OF THE SHOW WHICH WAS BIG FOR THE TIME WAS THAT IN THREE DAYS SEVENTY FOUR GLADIATORS FOUGHT.
LIVY, ANNAL FOR THE YEAR 174 BC

Gladiatorial reenactment has become more and more popular over the course of the last ten years, yet the only equipment available was not fit for mock-fights and was just remotely similar to the original findings, which derive mostly from the Gulf of Naples and were preserved through the vulcano-eruption of Mt. Vesuvius on the 24th of August 79 CE - or they were very expensive custom-made items. Our line of gladiator items is somewhere in between, we offer quite affordable, yet accurate objects in tinned steel, and in bronze for the better-to-do. We deliberately left away punched and chisselled decorations as can be found on most originals, not just to keep the price down, but also to allow for personalized designs. Apart from shield blanks, here you will get anything your gladiator's heart desires! If you follow the links for the different gladiator types (armaturae) below, you will find all items necessary for a display of this armatura, plus some basic background information about each gladiator type.

Ancient Empires Reproductions is a new brand of high quality Living History and reenactment products and replicas from the Ancient World. We plan for the future to supply items for different Ancient cultures, starting with a line of Gladiator items as well as Greek and Roman military and civilian items. These will be followed by product lines for early Italian, "Celtic", "Germanic" and Hellenistic Living History. Our Products are developed by Mr. Christian Koepfer, a lecturer in Ancient History and Roman Provincial Archaeology at the University of Augsburg, Mr. Matt Lukes Roman military arms and armour expert and artisan of Fabrica Romanorum Custom Ancient Recreations and the Roman Army Talk Forum, and world-renowned mail reconstruction artisan and expert Mr. Erik D Schmid. Each object is designed to be as close to its original artifact(s) as possible while still remaining affordable - wherever possible even original techniques and materials are used. 100% pure wool and linen, only vegetable-tanned leather and even real bronze for Greek and Roman gear prior to the introduction and widespread use of brass are among the materials that go into our recreations as our goal is to provide the collector, reenactor and living historian with the highest quality, most accurate pieces available anywhere.

POMPEII MURMILLO HELMET

AER/H/1510

POMPEII MURMILLO HELMET IN 16 GAUGE BRONZE WITHOUT LEATHER LINER. AFTER A FIND FROM POMPEII. 1. TO 2. C. CE

ALSO AVAILABLE IN TINNED STEEL:
AER/H/1510-TN



A FULL POMPEII MURMILLO KIT CONSISTS OF THE FOLLOWING ITEMS:

AER/1510 POMPEII MURMILLO HELMET
AER/AS/1501-GR MURMILLO / SECUTOR GREAVE
AER/CL/1503-STD-N SECUTOR / MURMILLO TEXTILE LEG ARMOUR
AER/CL/1501-LB TEXTILE ARMOUR RIGHT ARM
AER/MISC/1503 GLADIATOR BELT
AER/SWS/1502 SHORT SWORD
AER/GSH/1501 SECUTOR / MURMILLO SHIELD BOSS
AER/CL/1504-STD-WL SUBLIGACULUM

THRAEX HELMET

AER/H/1502

THRAEX HELMET IN 16 GAUGE BRONZE WITHOUT LEATHER LINER. RECREATED AFTER A FIND FROM POMPEII. 1. TO 2. C. CE

ALSO AVAILABLE IN TINNED STEEL:
AER/H/1502-TN



A FULL THRAEX KIT CONSISTS OF THE FOLLOWING ITEMS:

AER/1502 THRAEX HELMET
AER/AS/1502-GR THRAEX /HOPLOMACHUS GREAVES
AER/CL/1501-LB TEXTILE ARMOUR RIGHT ARM
AER/CL/1502- (SIZE)-N TEXTILE ARMOUR TROUSER
AER/MISC/1503 GLADIATOR BELT
AER/SWS/1503 THRAEX SICA

HOPLOMACHUS HELMET

AER/H/1505

HOPLOMACHUS HELMET IN 16 GAUGE BRONZE WITHOUT LEATHER LINER. RECREATED AFTER CONTEMPORARY DEPICTIONS, BASED ON THRAEX HELMET DESIGNS FROM POMPEII. 1. TO 2. C. CE

ALSO AVAILABLE IN TINNED STEEL:
AER/H/1505-TN

A FULL HOPLOMACHUS KIT CONSISTS OF THE FOLLOWING ITEMS:

AER/1505 HOPLOMACHUS HELMET
AER/AS/1502-GR THRAEX /HOPLOMACHUS GREAVES
AER/CL/1501-LB TEXTILE ARMOUR RIGHT ARM
AER/CL/1502- (SIZE)-N TEXTILE ARMOUR TROUSER
AER/MISC/1503 GLADIATOR BELT
AER/GSH/1503 HOPLOMACHUS SHIELD
AER/CL/1504-STD-WL SUBLIGACULUM



PROVOCATOR HELMET

AER/H/1503

PROVOCATOR HELMET IN 16 GAUGE BRONZE WITHOUT LEATHER LINER. RECREATED AFTER A FIND FROM POMPEII. 1. TO 2. C. CE
ALSO AVAILABLE IN TINNED STEEL:
AER/H/1503-TN

A FULL PROVOCATOR KIT CONSISTS OF THE FOLLOWING ITEMS:

AER/1503 PROVOCATOR HELMET
AER/AS/1503-GR PROVOCATOR GREAVE
AER/AS/1506 PROVOCATOR PECTORAL
AER/CL/1501-LB TEXTILE ARMOUR RIGHT ARM
AER/MISC/1503 GLADIATOR BELT
AER/SWS/1502 SHORT SWORD
AER/GSH/1502 SHIELD BOSS
AER/CL/1504-STD-WL SUBLIGACULUM



SECUTOR HELMET

AER/H/1504

SECUTOR HELMET IN 16 G BRONZE WITHOUT LEATHER LINER AFTER A FIND FROM POMPEII. BEFORE 79 CE

ALSO AVAILABLE IN TINNED STEEL:
AER/H/1504-TN

A FULL SECUTOR KIT CONSISTS OF THE FOLLOWING ITEMS:

AER/1504 SECUTOR HELMET
AER/AS/1501-GR MURMILLO / SECUTOR GREAVE
AER/CL/1503-STD-N SECUTOR / MURMILLO TEXTILE LEG ARMOUR
AER/CL/1501-LB TEXTILE ARMOUR RIGHT ARM
AER/MISC/1503 GLADIATOR BELT
AER/SWS/1502 SHORT SWORD
AER/GSH/1501 SECUTOR / MURMILLO SHIELD BOSS
AER/CL/1504-STD-WL SUBLIGACULUM



BERLIN MURMILLO HELMET

AER/H/1501

BERLIN MURMILLO HELMET IN 16 GAUGE BRONZE WITHOUT LEATHER LINER. AFTER A FIND NOW IN BERLIN. 2. TO 3. C. CE

ALSO AVAILABLE IN TINNED STEEL:
AER/H/1501-TN

A FULL BERLIN MURMILLO KIT CONSISTS OF THE FOLLOWING ITEMS:

AER/1501 BERLIN MURMILLO HELMET
AER/AS/1501-GR MURMILLO / SECUTOR GREAVE
AER/CL/1503-STD-N SECUTOR / MURMILLO TEXTILE LEG ARMOUR
AER/CL/1501-LB TEXTILE ARMOUR RIGHT ARM
AER/MISC/1503 GLADIATOR BELT
AER/SWS/1502 SHORT SWORD
AER/GSH/1501 SECUTOR / MURMILLO SHIELD BOSS
AER/CL/1504-STD-WL SUBLIGACULUM



GALERUS

AER/AS/1505-S

GALERUS, SHOULDER GUARD FOR
THE RETIARIUS. AFTER A FIND
FROM POMPEII, BEFORE 79 AD.
BRONZE
AER/AS/1505-S

ALSO AVAILABLE IN TINNED STEEL:
AER/AS/1505-S-TN



PROVOCATOR PECTORAL

AER/AS/1506

PROVOCATOR PECTORAL AFTER
CONTEMPORARY DEPICTIONS. 1. TO
2. C. CE
TINNED STEEL AND BRONZE.



GLADIATOR GREAVES



THRAEX / HOPLOMACHUS
GREAVES. PAIR. BRONZE. AFTER A
FIND FROM POMPEII. BEFORE 79
CE.

AER/AS/1502-QR

ALSO AVAILABLE IN TINNED STEEL:
AER/AS/1502-QR-TN



PROVOCATOR GREAVE. BRONZE.
AFTER A FIND FROM POMPEII.
BEFORE 79 CE.

AER/AS/1503-QR

ALSO AVAILABLE IN TINNED STEEL:
AER/AS/1503-QR-TN



PROVOCATOR GREAVE. BRONZE.
AFTER A FIND FROM POMPEII.
BEFORE 79 CE.

AER/AS/1501-QR-TN

ALSO AVAILABLE IN TINNED STEEL:
AER/AS/1501-QR-TN

GLADIATOR WEAPONS

RETIARIUS' TRIDENT. AFTER A FIND FROM LONDON. 1. TO 3. C. CE STEEL.

AER/SWS/1501



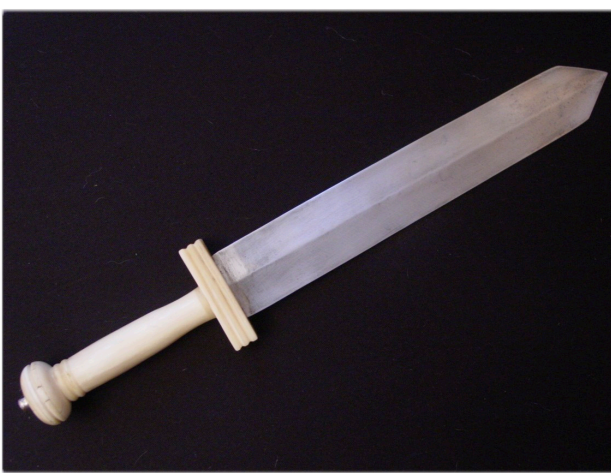
GLADIATOR DAGGER. AFTER A FIND FROM POMPEII. BEFORE 79 AD. BONE, STEEL.

AER/DG/1501



GLADIATOR SWORD. AFTER A FIND FROM POMPEII. BEFORE 79 AD. BONE, STEEL.

AER/SWS/1502



THRAEX SICA. AFTER CONTEMPORARY DEPICTIONS. 1. TO 3. C. AD BONE, WOOD, STEEL.

AER/SWS/1503



GLADIATOR GEAR



RETE, HEMP NET FOR THE RETIARIUS GLADIATOR. WITH LEAD WEIGHTS. AFTER CONTEMPORARY DEPICTIONS AND FINDS FROM THE GULF OF NAPLES. 1. TO 4TH. C. CE.
AER/MISC/1502



GLADIATOR BRASS BELT WITH LEATHER EDGING. AFTER CONTEMPORARY DEPICTIONS. 1. TO 4TH. C. CE.

AER/MISC/1503



HOPLOMACHUS SHIELD, 53 CM DIAMETER, DEPTH 22 CM. AFTER CONTEMPORARY DEPICTIONS.

AER/GSH/1503-BRS, BRASS
AER/GSH/1503-MS, MILD STEEL



GLADIATOR GEAR - TEXTILE ARMOUR

GLADIATOR GAITERS. AFTER
CONTEMPORARY DEPICTIONS. 1.
TO 4TH. C. CE.
VEGETABLE-TANNED LEATHER.

AER/SH/1501-8/(YOUR EU SIZE)-N



MANICA, TEXTILE ARM GUARD.
AFTER CONTEMPORARY
DEPICTIONS. 1. TO 4TH. C. CE.
AVAILABLE FOR LEFT AND RIGHT
ARM, PLEASE SPECIFY.

AER/CL/1501-LB



SECUTOR / MURMILLO LEG
ARMOUR FOR LEFT LEG. AFTER
CONTEMPORARY DEPICTIONS. 1.
TO 4TH. C. CE.

AER/CL/1503-STD-N



THRAEX / HOPLOMACHUS
ARMOUR TROUSERS. AFTER
CONTEMPORARY DEPICTIONS. 1.
TO 4TH. C. CE. AVAILABLE IN M, L,
XL AND XXL.

AER/CL/1502-(SIZE)-N



SHIELD BOSSES



AUGUSTAN / TIBERIAN SHIELD BOSS
AFTER TWO FINDS FROM
KEMPTEN / CAMBODUNUM,
BAVARIA. TINNED STEEL

AER/GSH/1505-BO



LARGE RECTANGULAR SHIELD
BOSS, 50-300 AD

BRONZE:
AER/GSH/1501-BRZ-BOSS ONLY
BRASS
AER/GSH/1501-BRS-BOSS ONLY
MILD STEEL:
AER/GSH/1501-MS-BOSS ONLY



HEXAGONAL SHIELD BOSS, 9 BC-300
AD

BRONZE:
AER/GSH/1502-BRZ-BOSS ONLY
BRASS
AER/GSH/1502-BRS-BOSS ONLY
MILD STEEL:
AER/GSH/1502-MS-BOSS ONLY

ANCIENT EMPIRES REPRODUCTIONS

Distributed through:

**Historical Reproductions GmbH
Industriestr. 4
56581 Kurtscheid
Germany**

**Contact:
Mr. Christian Büchel, Manager
Telephone: 02634-921626
Fax: 02634-921693
office@gdfb.com**

ALSO AVAILABLE THROUGH:

